



Recyclable packaging



- less waste
- reducing the exploitation of natural resources
- reduction of emissions of harmful substances into environment



For contact with food



Do not contain allergens and GMO



Packaging on automatic packaging machines



Full flexo or digital printing



Raw materials of cellulose origin have FSC certificate



Barrier for water vapor



Oxygen barrier



Thermoweldability



| MATERIAL TYPE | Oxygen [cm ³ /m ² /day] | Water vapour [g/m ² /day] |
|-------------------|---|--------------------------------------|
| OPP40 | >1300 | <5,5 |
| PE30/PE90 EVOH | <2,5 | 3,5 |
| OPP20 EVOH/ CPP60 | 10 | 6,5 |
| REC PAPER WHITE | ≤5 | ≤10 |
| REC PAPER KRAFT | - | 20 |

Oxygen permeability refers to temperature 23 degrees and relative humidity 0% and to temperature 23 degrees and relative humidity 50%. Water vapour permeability refers to temperature 38 degrees and relative humidity 90%. The barrier parameters were estimated on the basis of data from material suppliers and are for information purposes only. Laboratory tests should be carried out to determine the exact data.



www.coffee-service.eu



Monofolds and laminates for recycling



The monofolds and laminates based on paper, polyethylene and polypropylene, suitable for reuse, are an excellent example of a combination of high barrier, mechanical properties and very good sealability. They can successfully replace non-recyclable laminates or multi-material structures, finding wide application in the food industry.



OPP

- high transparency and gloss
- good mechanical properties
- good weldability
- low water vapor permeability



PE/PE EVOH alternative for PET/PE

- very good barrier properties
- good mechanical properties
- very good weldability
- high flexibility



OPP EVOH/CPP alternative for OPP/PE i OPP/OPPmet

- flexibility
- high mechanical strength
- excellent weldability
- high transparency
- good barrier



REC PAPIER WHITE alternative for PAP/PET/PE

- high water vapor barrier
- high barrier for oxygen
- opacity
- average strength mechanical



Already soon!

NEW
REC PAPIER KRAFT

Standard packaging for recycling

www.coffee-service.pl



| REC DOYPACK | | | width x depth | ~85x50 | ~110x65 | ~130x70 | ~160x80 | ~180x90 |
|----------------------------|----|-----|---------------|--------|---------|---------|---------|---------|
| | | | height | 145 | 185 | 225 | 270 | 290 |
| | | | foil width | 340 | 440 | 520 | 620 | 670 |
| REC OPP OPP | 40 | Z/s | | • | • | • | • | • |
| REC TRANSPARENT PE/PE EVOH | 80 | Z/s | | | • | • | • | • |
| REC PAPIER WHITE | 75 | B/s | | | • | | | |



ZIPPER OPP



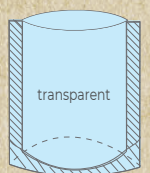
Doypack with zipper



ZIPPER PE



Doypack without zipper



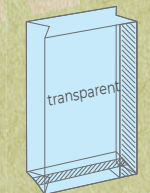
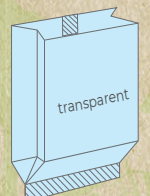
| REC GUSSET POUCH | | | width x depth | 30 | 50 | 100 | 250 | 500 | 1000 |
|------------------------|----|--|---------------|--------|-------------|-------------|-------------|-------------|-------------|
| | | | height | ~50x25 | ~65x35 | ~80x35 | ~80x45 | ~100x55 | ~135x70 |
| | | | foil width | 190 | 190 155* | 210 180* | 280 235* | 330 285* | 360 290* |
| REC BOTTOM* OPP | 40 | | • | • | • | • | • | • | |
| REC BOTTOM MAT* OPPmat | 40 | | | • | • | • | • | • | |
| REC OPP OPP | 40 | | | • | • | • | • | • | |
| REC PAPIER WHITE | 75 | | | | | • | • | • | |
| REC PAPIER KRAFT | 84 | | | | | • | • | • | |



Gusset pouch



BOTTOM



| REC SACHET | | | width x depth | 85 | 110 | 130 | 160 |
|------------------|----|--|---------------|---------|----------|----------|----------|
| | | | foil width | ~85x140 | ~110x170 | ~130x220 | ~160x260 |
| | | | foil width | 280 | 340 | 440 | 520 |
| REC OPP OPP | 40 | | • | • | • | • | |
| REC PAPIER WHITE | 75 | | • | • | • | | |
| REC PAPIER KRAFT | 84 | | • | • | • | | |



Sachet

