



degradable packaging



Check by yourself!

## BIO materials alternative for conventional materials!

Packaging materials, fully **biodegradable**, made from renewable raw materials: **corn, potatoes and wood.**



For contact with food.



Do not contain allergens and GMO.



Packaging on automatic packaging machines.



Full flexo or digital printing.



Raw materials of cellulose origin have FSC certificate.



Barrier for water vapor.



Oxygen barrier.



Thermoweldability.

Can be used on packaging machines. All materials used in the production of our BIO laminates have got certificate of compostability.

Comparison of barrier of mono film BIO and traditional plastics (permeability on oxygen and water vapour).

**Certificate of biodegradable packaging by Coffee Service Sp. z o.o.**

**66 days**

Biodegradable renewable raw materials

CO<sub>2</sub>, H<sub>2</sub>O, Biomass

Laboratory tests (done in accordance with **PN-EN 14806:2010 norm**) confirm 100% of degradation of BIO packagings in composting conditions within **66 days.**

FILM TYPES	Oxygen [cm <sup>3</sup> /m <sup>2</sup> /day]	Water vapour [g/m <sup>2</sup> /day]
<b>BIO LIGHT PLUS + BIO WINDOW PLUS</b>	<b>4,076</b>	<b>7,49</b>
<b>BIO NATURA + BIO WINDOW</b>	<b>4,13</b>	<b>9,06</b>
OPP40	>1300	<5,5
PET12/PE80	130	15
PAP40/OPP40	>1300	<5,5
PAP40/PET12/PE80	130	15
<b>BIO NATURA MET</b>	<b>0,08</b>	<b>3,19</b>
PET12met/PE80	1,78	1,52
OPP20mat/PET12met/PE80	<1,5	<0,5
PAP40/OPP30met	<50	<0,5

Oxygen permeability refers to temperature 23 degrees and relative humidity 0% and to temperature 23 degrees and relative humidity 50%.  
Water vapour permeability refers to temperature 38 degrees and relative humidity 90%.



[www.coffee-service.eu](http://www.coffee-service.eu)



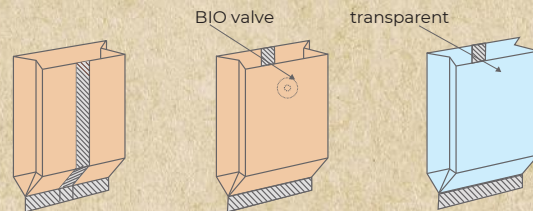


# Standard BIO packaging

www.coffee-service.pl



BIO GUSSET POUCHES				100	250	500	1000
			width x depth	~80x35	~80x45	~100x55	~135x70
			height	~210	~280	~330	~360
			foil width	260	280	340	440
BIO NATURA	30			•	•	•	•
BIO NATURA MET	30			•	•	•	•
	30	valve BIO			•	•	
	60					•	
	60	valve BIO				•	
	90						•
	90	valve BIO					•



BIODEGRADABLE VALVE

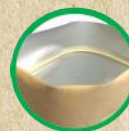


BIO Gusset pouch NATURA

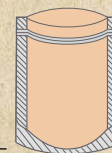


BIO Gusset pouch NATURA MET

BIO DOYPACK				250	500	750	1000	2000
			width x depth	~110x65	~130x70	~160x80	~180x90	~210x110
			height	~185	~225	~270	~290	~310
			foil width	440	520	620	670	730
BIO	60	Z/s		•	•	•		
BIO NATURA	30	Z/s		•	•	•		
	60	Z/s					•	•
BIO NATURA MET	30	Z/s		•	•	•		
	60	Z/s					•	•
BIO WINDOW	30	Z/s		•	•	•		
	60	Z/s					•	
BIO WINDOW PLUS	25	Z/s			•			
BIO LIGHT PLUS	25	Z/s		•	•	•		



BIODEGRADABLE ZIP



BIO Doypack NATURA



BIO Doypack NATURA MET



BIO Doypack WINDOW



BIO Doypack WINDOW PLUS

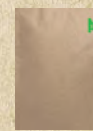


BIO Doypack LIGHT PLUS

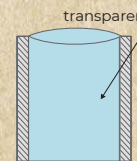
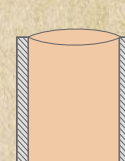
BIO SACHETS				85	110	130	160
			width x depth	~85x140	~110x170	~130x220	~160x260
BIO NATURA	30			•	•	•	•
BIO NATURA MET	30			•	•	•	•
BIO LIGHT PLUS	25			•	•	•	•



BIO Sachet NATURA



BIO Sachet NATURA MET



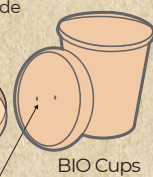
BIO CUPS			240	350	470	760	940
		Φ upper	90	90	97	117	117
		Φ lower	72	72	74	95	93
		height	62	86	102	115	128
BIO CUPS			•	•	•	•	•



lid from the inside insidewith a membrane



enabling holes gas exchange first



BIO Cups

It is possible to order any size.

# Standard BIO laminates



BIO alternative to PAP/PE



BIO WINDOW alternative to PAP/PET/PE



BIO WINDOW PLUS alternative to PAP/PET/PE



BIO LIGHT alternative to OPP



BIO NATURA MET alternative to PAP/AL/PE



BIO NATURA alternative to PAP/PET/PE

